

# Disease Web Quest

Name: \_\_\_\_\_

Due: On the day of your final

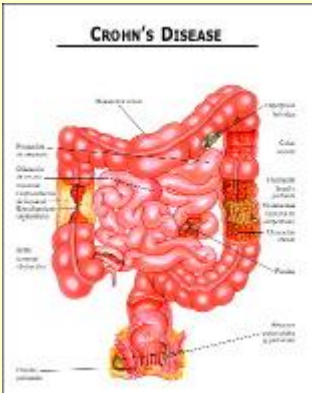

Task:

You are to research a non-communicable disease and use Microsoft Publisher (or similar software) to create an informational brochure (like you would find in a Doctor's office) that any person could look at and become better informed about the disease. Your brochure must identify the symptoms of the disease, the cause of the disease, describe the effects the disease has on the body and state the course of treatment.

Procedure:

1. Each individual will be assigned a non-communicable disease.
2. Using the resources below, you will answer the following questions:  
Page 1: Name of the disease, an picture of the disease for the cover of a brochure and your name.  
Page 2: What are the risky behaviors for the disease?  
Page 3: What are the symptoms of the disease?  
Page 4: What is the recommended treatment for the disease?  
Page 5: What are prevention tips?  
Page 6: Please include a list of your works cited.
3. You will present your findings in a brochure (much like you would find in a Doctor's) office
4. Your brochure will include appropriate graphics/pictures, readability, and all required information.

Resources: Useful searches for each disease

Disease	Picture	Resources (searches)
Crohn's Disease		<p><a href="#">Crohns - a digestive disease</a></p> <p><a href="#">Frequently Asked Questions - Crohns</a></p> <p><a href="#">GastroIntestinal Care</a></p>
Irritable Bowel Syndrome		<p><a href="#">All About Irritable Bowel Syndrome</a></p> <p><a href="#">Irritable Bowel Syndrome</a></p> <p><a href="#">Bad Gut - Irritable bowel Syndrome</a></p>

Asthma



[Asthma](#)

[Family Doctor on Asthma](#)

[Mayo Clinic](#)

Obesity

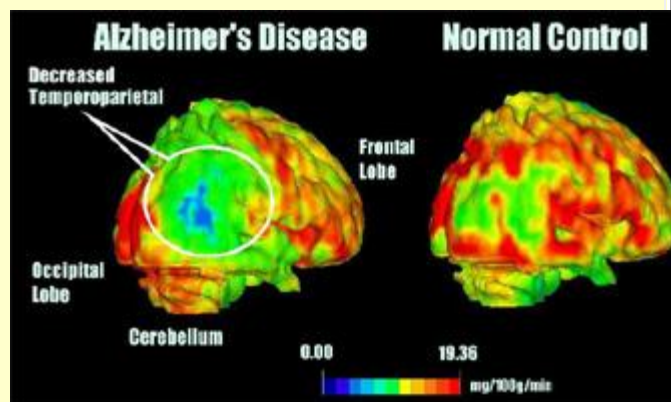


[Teen Obesity](#)

[Mayo Clinic on Obesity](#)

[MedlinePlus on Obesity](#)

Alzheimers



[Alzheimers and Teens](#)

[Mayo Clinic on Alzheimers](#)

[MedlinePuls on Alzheimers](#)

Stroke

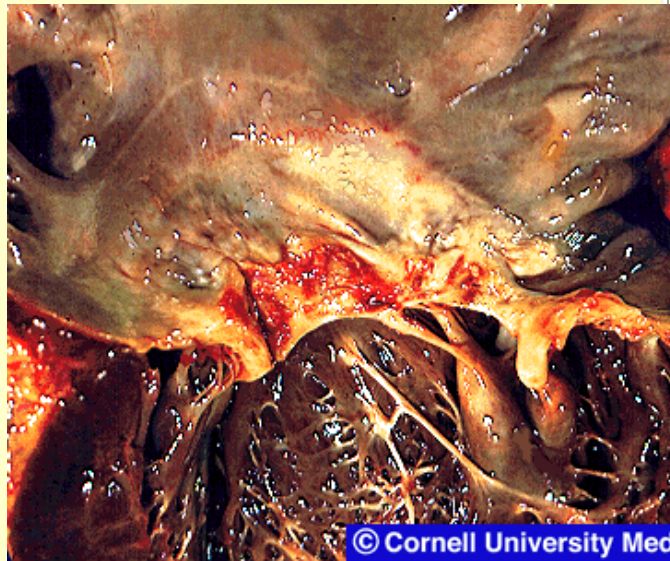


[Mayo Clinic on Stroke](#)

[MedlinePlus on Stroke](#)

[All about Stroke](#)

Heart Disease



[Heart and Stroke](#)

[Heart Attack, Stroke and Cardiac Arrest](#)

[Heart Disease 101](#)

[Mayo Clinic on Heart Disease](#)

[Web MD - Heart Disease](#)

Skin Cancer

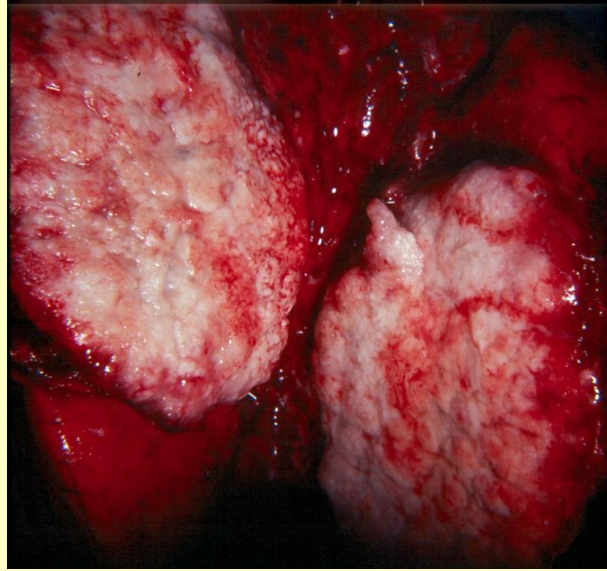


[Mayo Clinic on Skin Cancer](#)

[Skin Cancer Information](#)

[Skin Cancer PDQ and Treatment](#)

Lung Cancer

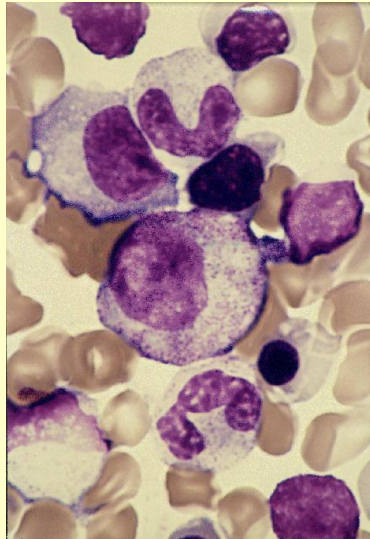


[Mayo Clinic on Lung Cancer](#)

[Lung Cancer](#)

[Lung Cancer Information](#)

Leukemia

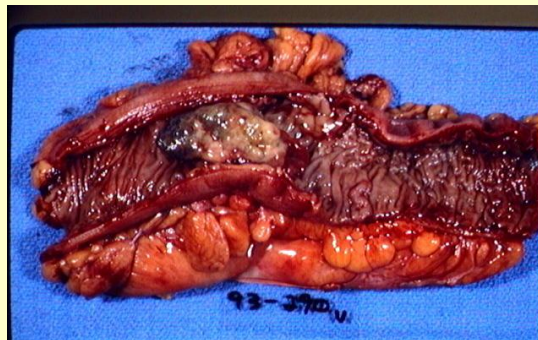


[Mayo Clinic on Leukemia](#)

[Leukemia - pdq - treatment](#)

[Kid's Health.org - Leukemia](#)

Colon Cancer

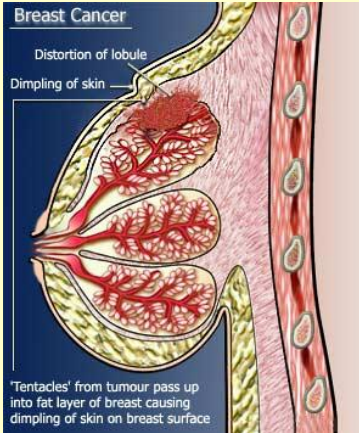


[Colon Cancer Information](#)

[Cancer Topics - pdq - treatment](#)

[Colon\\_cancer](#)

## Breast Cancer



[Cancer Information](#)

[Family Doctor](#)

[Mayo Clinic on Breast Cancer](#)

## Diabetes 1



[Mayo Clinic on Diabetes 1](#)

[Diabetes.org](#)

[Family Doctor](#)

## Diabetes 2



[Mayo Clinic on Diabetes 2](#)

[Type 2 Diabetes](#)

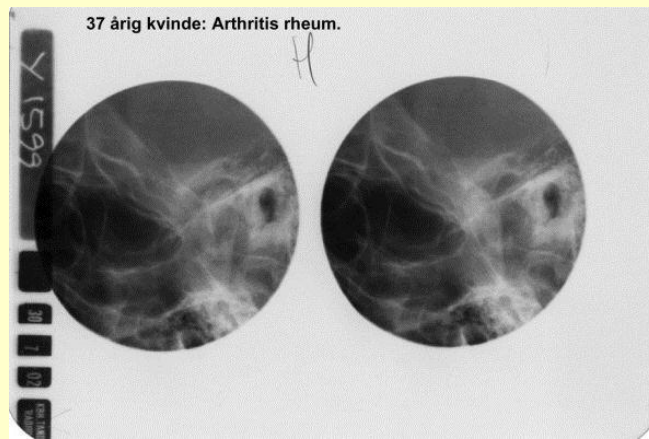
[Type 2 Diabetes More Info](#)

Lupus



[Mayo Clinic on Lupus](#)  
[Living with Lupus](#)  
[Lupus.org](#)

Arthritis



[Family Doctor](#)  
[Mayo Clinic on Arthritis](#)  
[Arthritis Portal](#)

Allergies



[Allergies](#)  
[Prevention of Allergies](#)  
[Teens and Allergies](#)  
[MedlinePlus on Allergies](#)  
[Medicine.net on Allergies](#)

## Making A Brochure : Informative Pamphlet Rubric

CATEGORY	10	7.5	5	2.5	Total
<b>Content - Accuracy</b>	All facts in the brochure are accurate.	99-90% of the facts in the brochure are accurate.	89-80% of the facts in the brochure are accurate.	Fewer than 80% of the facts in the brochure are accurate.	
<b>Attractiveness &amp; Organization</b>	The brochure has exceptionally attractive formatting and well-organized information.	The brochure has attractive formatting and well-organized information.	The brochure has well-organized information.	The brochure's formatting and organization of material are confusing to the reader.	
<b>Graphics/Pictures</b>	Graphics go well with the text and there is a good mix of text and graphics.	Graphics go well with the text, but there are so many that they distract from the text.	Graphics go well with the text, but there are too few and the brochure seems "text-heavy".	Graphics do not go with the accompanying text or appear to be randomly chosen.	

\_\_\_\_\_/30